



## 03 ARNICHES REHABILITATION

### LA RESIDENCIA DE SEÑORITAS. THE ARNICHES BUILDING

La Residencia is located at the rear end of the "mansion", almost touching it, through a subtle embrace of the curved volume of the staircase.

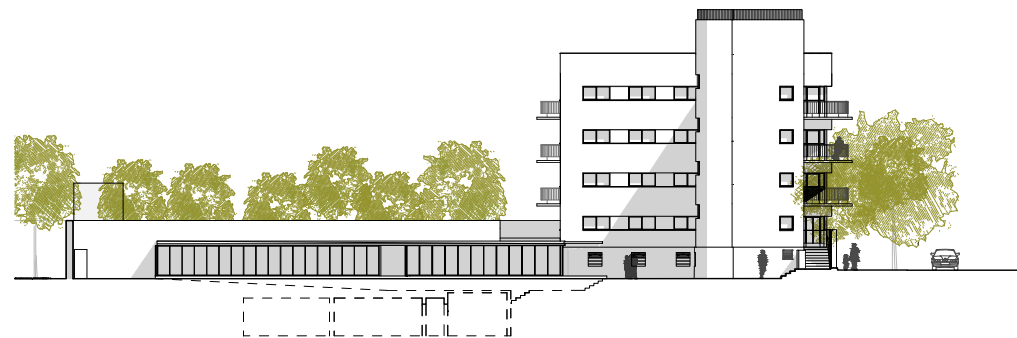
It responds to the classic "hotel" typology, a corridor that threads the rooms and common toilets, creating towards Gral. Martínez Campos street has a large window and overhanging terraces that generate the most iconic façade of the building.

The interior, formed by small-scale spaces, except for the staircase, is wide in its traces and beautiful in its design.

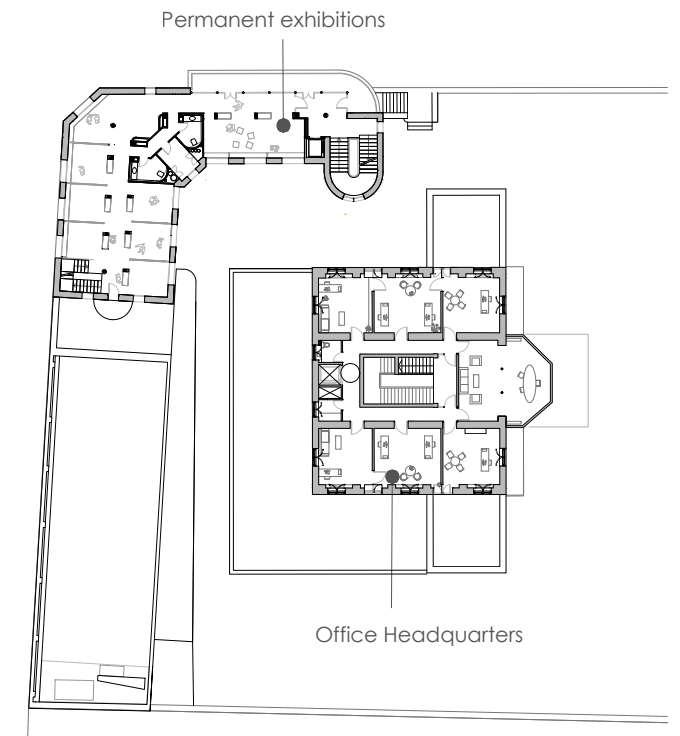
A building resolved with austere materials, a plaster façade, steel carpentry with wooden roller shutters and a Catalan-style flat roof.

Today its first floors are reserved for exhibition spaces of small formats, books, letters, documents and images of Ortega y Marañón. These small formats have made it possible to design a continuous sequence of exhibition subspaces while maintaining the reference to the spaces of the original rooms.

The rest of the floors, the original spaces, are adapted to researchers' offices.



INTERIOR EAST ELEVATION. E/1:500



FIRST FLOOR. E/1:600



ARNICHES. EXHIBITION AREA CORRIDOR. 2022



ARNICHES. EXHIBITION AREA. 2022



ARNICHES. EXHIBITION AREA. 2022



ARNICHES. STAIRS. 2022